


CHAMPIONS®

Mill Street Elementary

February 24, 2022





Partnering With You!

- ▶ Our Priority is to ensure health and safety practices are always in place.
- ▶ Provide a warm and welcoming environment with highly engaged staff in each program
- ▶ Maintain open communication with families to provide the best care for your child
- ▶ Flexible scheduling week to week

Our Service Values

I BUILD GREAT RELATIONSHIPS
WITH **FAMILIES**

I RESPOND TO THE **UNIQUE NEEDS** AND
INTERESTS OF **EVERY CHILD**

I ANTICIPATE AND **QUICKLY RESOLVE**
PARENTS' CONCERNS

MY TEAM WORKS TOGETHER TO MAKE
OUR PROGRAM WARM AND **WELCOMING**

I GENUINELY CARE ABOUT **EVERY CHILD**
IN **MY CLASSROOM**

AN **IMPORTANT PART** OF MY JOB **IS TALKING**
WITH **PARENTS ABOUT THEIR CHILDREN**

CHAMPIONS.

OUR SERVICE VALUES

Holding Ourselves to a Higher Standard

**5x
winner**



We're the first and only early childhood education company to be recognized for exceptionally high levels of workplace engagement by investing in our people and culture.



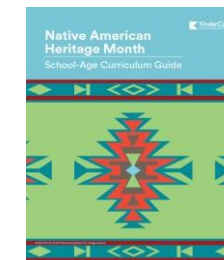
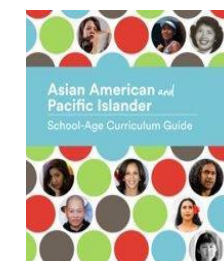
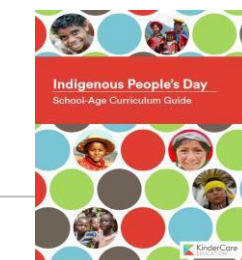
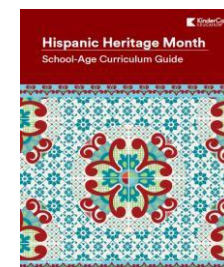
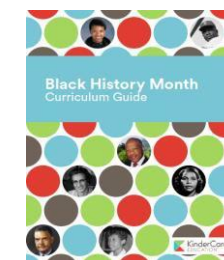
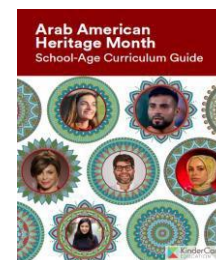
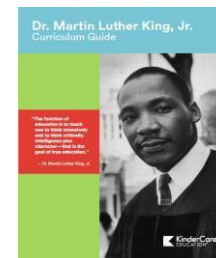
Proud to partner with



School-Age Curriculum

DEI Monthly Infusion

FALL MANUAL	WINTER MANUAL	SPRING MANUAL
Unit One: Getting to Know You	Unit Seven: Weather and Natural Disasters	Unit Fourteen: The Way to Wellness
Unit Two: Strategy Games	Unit Eight: Puppet Production	Unit Fifteen: The Art of Improv
Unit Three: Words, Words, Words	Unit Nine: Bridge-Building Basics	Unit Sixteen: Create Your Own Newspaper
Unit Four: Gross and Goopy Physiology	Unit Ten: Advertising 101	Unit Seventeen: Caring For Our Planet
Unit Five: Pop Art	Unit Eleven: Maps and More Maps	Unit Eighteen: Dollars and Cents
Unit Six: Simple Machines	Unit Twelve: American Folk Music	Unit Nineteen: Exploring the Elements of Art
	Unit Thirteen: Our Solar System	Unit Twenty: It's a Wrap



School-Age Program Components

- Interest Areas
- Homework Support
- Snack
- Daily Fitness
- Project Based Learning
- Jr. Counselors
- Classroom Clubs
- Student Journals

Science: Play-Dough Organs

PREPARATION

to chart paper, nt.

Puzzles and Games: Digestive System Puzzles

PREPARATION

st. Place the, referring to models of the play-dough

Math and Construction: Measure It

PREPARATION

- Make one copy of the Measure It sheet for each student. Place the

y they wish.

Library: Books About Gross and Goopy Physiology

PREPARATION

- Supplement the library with books that complement the theme "Gross and Goopy Physiology." Refer to the Recommended Book List as a guide for

hem write tool to draw tem, and

plain that then they she

Creative Arts: Eyeballs

PREPARATION

- Make one copy of the sheet Eyeball Diagram to place in the Interest Area.

INSTRUCTIONS

- » Tell students to review the eyeball diagram and to read the accompanying information. Assist with reading as needed.
- » Students can then use markers to draw parts of the eyeball on one or two Ping-Pong® balls.
- » Encourage students to copy the diagram in their journals and label the parts of the eyeball.
- » Students can also work with a partner to draw pictures of each other's eyes.

ysiology to ons in the

Structured Routine and Schedule

Program Schedule

Morning Program

6:30 - 8:00 am	Arrival
	Interest Areas /Interest Area Activities (tech and homework/eLearning time included)
8:00 - 8:15 am	Welcome Activity
8:15 - 8:30 am	Theme-Related Activity
8:30 - 8:45 am	Fitness Activity or Group Game
8:45 am	Dismissal

Afternoon Program

3:05 - 3:15 pm	Arrival and attendance
3:15 - 3:30 pm	Welcome Activity (discussion, unit intro, community builders, group tech activities)
3:30 - 4:30 pm	Snack/ Homework/eLearning/Theme-Related Activity and Interest Area Activities
4:30 - 5:00 pm	Fitness Activity and/or Group Games
5:00 - 5:45 pm	Classroom Club or Projects
	Interest Areas including Technology
5:45 - 6:00 pm	Clean up
6:00 pm	Program close

WHERE LEARNING *and*
FUN COME TOGETHER!

CHAMPIONS
BEFORE AND AFTER SCHOOL



Champions Before and After School

Naperville203 Champions 2022/2023 Registration Information

Annual Registration Fee: \$68.00 per child / \$108.00 per family

Before-School Program session Hours: 6:30am - 8:10am

After-School Program session Hours: 2:30pm - 6:00pm

Tuition:

Program Sessions	Daily Rate
Before-School Program	\$11.00 per day
After-School Program	\$23.00 per day

Additional Fees:

Early Release	Full Day/ No School	Winter Break/ Spring Break <i>Where applicable</i>
Additional \$18.00 per day	Additional \$58.00 per day	Additional \$58.00 per day

Early release days, Full days and Breaks are subject to cancellation based on enrollment requirements.

**Champions does accept third party subsidy for its tuition through the state of Illinois.
(Upon approval from the state)*

For any questions, please contact: Area Manager- Paula Short
Cell- (847) 850-9817 Email- PShort@klcorp.com

Save your child's spot by registering at www.discoverchampions.com

Contact Customer Support at 800-246-2154

FRIENDLY REMINDERS

for **OUR FAMILIES**

SCHEDULING



Wednesday is the last day to change next week's schedule

Tuition is based on your online schedule (not attendance)

Use "custom schedule" for any one-time schedule changes, like vacation

BILLING



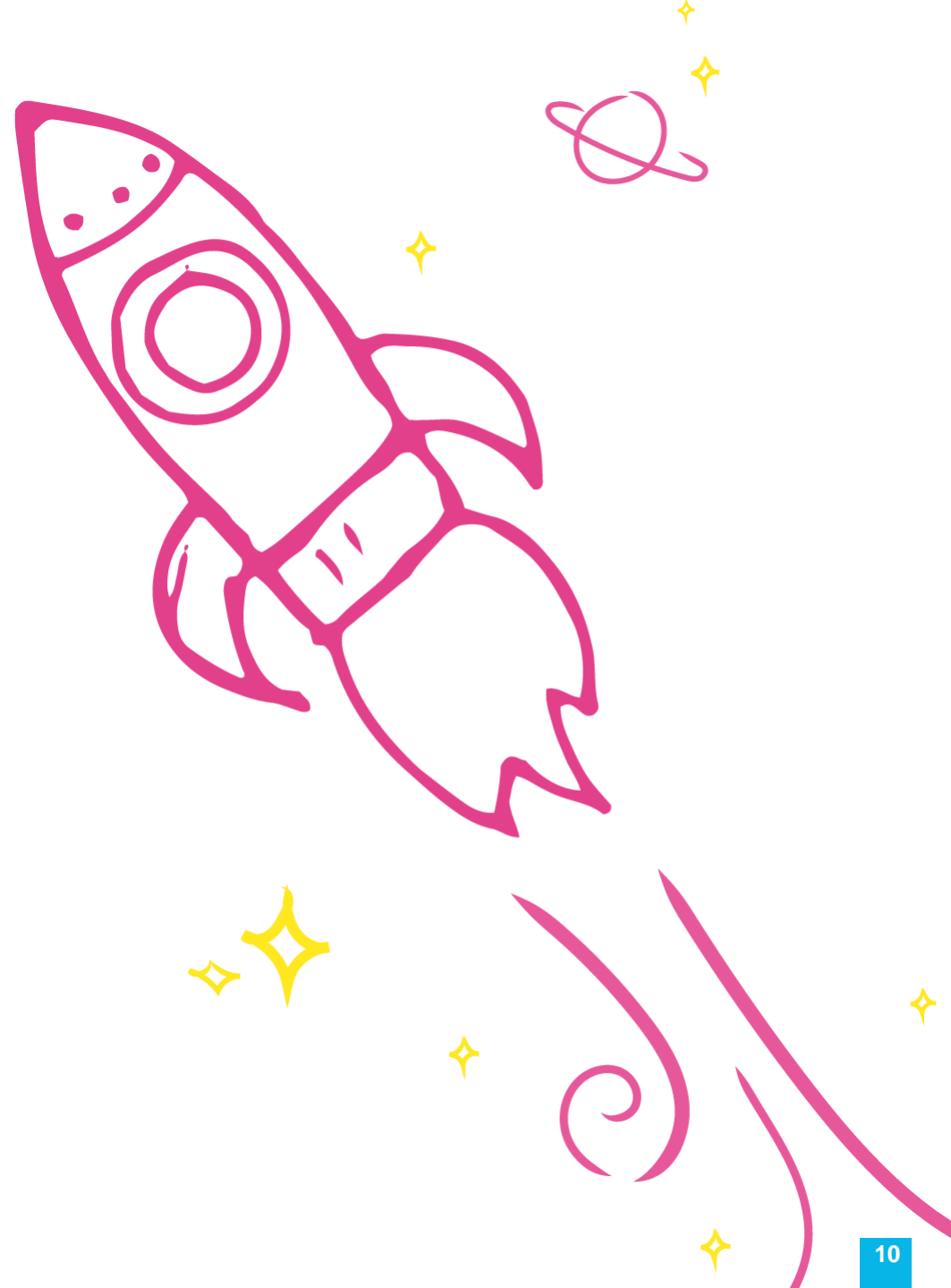
Wednesday is the last day to pay this week's tuition to avoid a late fee (\$10)

If account is "pending disenrollment", re-enroll by Friday to avoid disruption and fee

Auto-disenrollment will happen if tuition is not paid for two weeks

Pay tuition with debit, credit, or electronic checks

Children must be enrolled online to attend Champions to ensure we have the information to keep them safe, including sign-in/sign-out codes, medical history, and emergency contacts.





CHAMPIONS®

THANK YOU

Paula Short— Area Manager

Champions

Phone: (847) 850 0817